

# The Loyola Schools Wireless Network Connection Guide

## Step 1. Configure the Wireless Network Card

- Click [Start](#), select [Control Panel](#)
- Click [Network and Internet Connections](#)
- Click [Network Connections](#)
- Right click on the [Wireless Network Connection](#) icon and select [Properties](#). The [Wireless Network Connection Properties](#) window opens.



- Click the [Wireless Networks](#) tab
- Click the [Use Windows to configure my wireless network settings](#) check box
- Under [Preferred networks](#), click [Add](#). The [Wireless Network Properties](#) window opens.



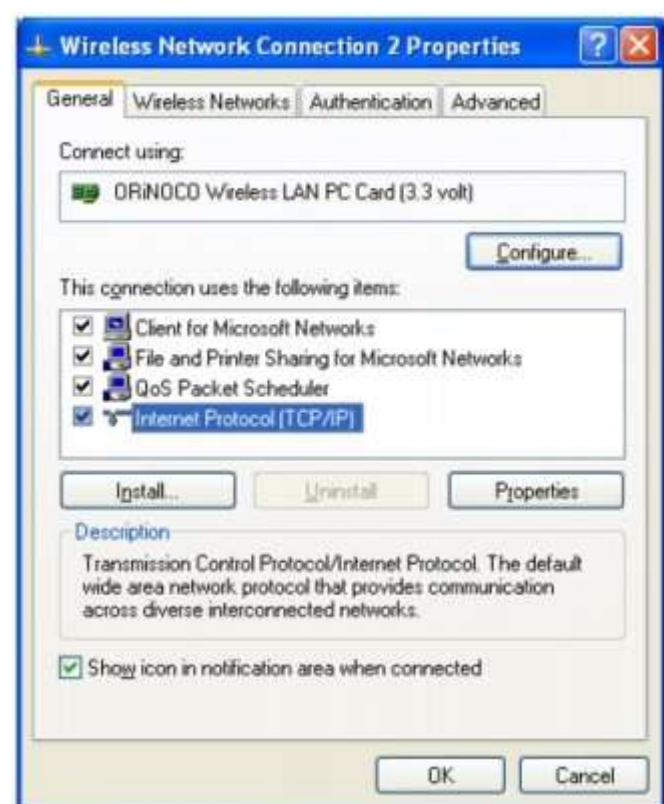
- Type **LSWLAN1** in the [Network Name \(SSID\)](#) field
- Deselect the [The key is provided for me automatically](#) check box
- Click [Data encryption \(WEP enabled\)](#). Type in the **WEP key** in the [Network key](#) field.

NOTE: The WEP key is in hexadecimal format

- Proceed to **#14** if the [Wireless Network Properties](#) window is different from the screenshot above.
- Select [Hexadecimal Digits](#) from the [Key format](#) list
- Select [40 bits \(5 characters\)](#) from the [Key length](#) list
- Make sure the following are also **deselected**:
  - [Network Authentication \(Shared mode\)](#) check box
  - [This is a computer-to-computer \(ad hoc\) network](#) check box
- Click [OK](#)

## Step 2. Configure TCP/IP Settings

- Click [Start](#), select [Control Panel](#)
- Click [Network and Internet Connections](#)
- Click [Network Connections](#)
- Right click on the [Wireless Network Connection](#) icon and select [Properties](#). The [Wireless Network Connection Properties](#) window opens.



- Click the [General](#) tab
- Select [Internet Protocol \(TCP/IP\)](#) and click [Properties](#). The [Internet Protocol \(TCP/IP\) Properties](#) window opens.



- Click [Obtain an IP address automatically](#)
- Click [Obtain DNS server address automatically](#)
- Click [OK](#)

## Step 3. Configure Internet Explorer

- Launch the [Internet Explorer](#) browser
- Click [Tools](#)
- Click [Internet Options](#)
- Click the [Connections](#) tab
- Click [LAN Settings](#). The [Local Area Network \(LAN\) Settings](#) window opens.



- Click the [Use automatic configuration script](#) check box
- In the [Address](#) field type:

<http://sisig.ateneo.net/browser.pac>

- Deselect the [Use a proxy server for your LAN](#) check box
- Deselect the [Automatically detect settings](#) check box
- Click [OK](#)